

# THE BELARY D C C BANK LTD

Hospet, Karnataka, India.

## Case Study and Success Story

In Association with their

Technology Partner

**SOFTBEE**

### **BDCC BANK LTD, HOSPET - Back Ground**

---

The Bellary DCC Bank Ltd., is an Schedule/Co-Op Bank established in the year 1920 to help the common people and presently registered under the Karnataka State Co-Op Act and Licensed by Reserve Bank of India and Governed & monitored under the guidelines of NABARD (National Bank for Agricultural and Rural Development Bank) and Karnataka State Apex Bank Ltd.

The Bank Head office is having 24 branches to address the retail banking and commercial needs of general public and 136 PACS (Primary Agricultural Co-Op Societies) as their affiliated members to extend the financial assistance to the most privileged farming sector agriculturist in their region.

The Government of INDIA is assisting the Bank through NABARD with special schemes to encourage the agriculture sector across their geographical area.

## **BDCC BANK LTD, HOSPET - Back Ground**

---

To ensure speedy, accurate and better service to their customers The Bank has migrated to TBA (Total Branch Automation) and computerised all their branches during 2009-10. Further, to fulfil the other digital banking demand, the bank has moved to CBS (Core banking solution) during the year 2013.

Apart from traditional Retail banking, today, The bank is serving all their customers with present digital banking technological suites like ATM, POS, NEFT/RTGS, SMS alerts, IMPS and shortly incorporating Internet banking and Mobile Banking.

### **BDCC BANK LTD, HOSPET - Association with SOFTBEE**

---

The BDCC Bank Ltd has partnered with M/s. Softbee Consultancy Services Pvt Ltd., during the year 2010 and awarded a contract to computerise all their branches with Softbee's Banking application Software "ACCFINA – TBA" and train their employees to work under the newer computerised environment.

Subsequently, Softbee has completed their "ACCFINA–TBA", Retail Banking implementation at Head office and across al 24 branches of BDCC Bank Ltd and extended the hands on training to all their officially nominated employees. The said task was completed within the scheduled time frame of the contract and got appreciation from the management.

### **BDCC BANK LTD, HOSPET - Association with SOFTBEE**

Based on the previous successful experience, during the year 2012-13, SOFTBEE was chosen by the Bank to build and setup the Data Centre at the bank premises and also awarded to implement the ACCFINA-CBS with delivery channels like ATM, NEFT/RTGS, POS, SMS Services.

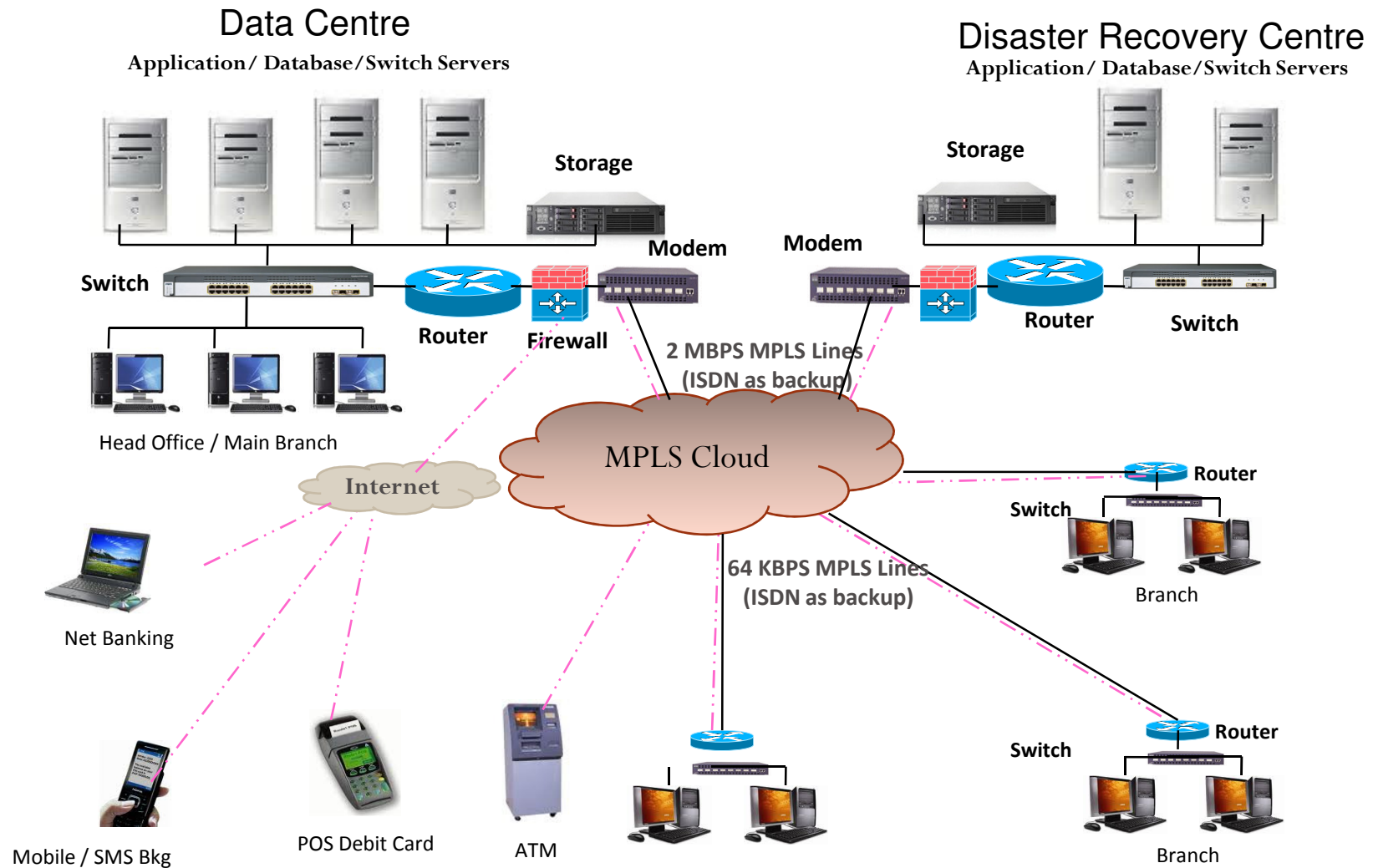
That apart, SOFTBEE was also awarded with PACS computerisation across all the PACS, which are affiliated members of BDCC Bank Ltd.

Further, during the year 2013, The DC Has been built and brought the entire transaction of retail banking under ACCFINA – CBS and during 2013, 14, 15 around 85 PACS has also been computerised by SOFTBEE.

Currently, at BDCC Bank Ltd., ACCFINA – CBS has also been implemented with delivery channels like ATM, NEFT/RTGS, POS, SMS information, APBS (Aadhar payment Bridge System) for all Government payment.

# AccFina - Core Banking Solution – Case study

## BDCC BANK LTD - AccFina - CBS And DC & DRC Infrastructure





ಬಳ್ಳಾರಿ ಜಿಲ್ಲಾ ಸಹಕಾರ ಕೇಂದ್ರ ಬ್ಯಾಂಕ್ ನಿ.,

ಪ್ರಧಾನ ಕಛೇರಿ: ರೈಲ್ವೆ ನಿಲ್ದಾಣದ ರಸ್ತೆ, ಹೊಸಪೇಟೆ - 583 201. ಜಿಲ್ಲೆ ಬಳ್ಳಾರಿ.

**THE BALLARI DIST. CO-OP. CENTRAL BANK LTD.,**

HEAD OFFICE : RAILWAY STATION ROAD, HOSAPETE-583 201. DIST BALLARI.

Reg. No. 5398

☎ : 08394-228208/09

e-mail : bdcchpt@rediffmail.com

Estd : 12-12-1920

Fax : 08394-224485

CEO : 08394-224487

No.A&E/Comp/ 344<sup>0</sup> /2015-16

Date:29.01.2016

**WHOM SO EVER IT MAY CONCERN**

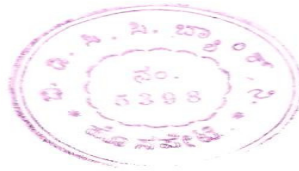
This is to confirm that, M/s. Softbee consultancy services Pvt. Ltd., Bangalore, have supplied and installed IBM Make servers, Lenovo make Desktop systems, CISCO make Routers, Anexgate make Firewall system, PowerOne make 15KV Online UPS and Powerica make generators and also built data-centre at our bank premises with necessary accessories.

All 24 branches of the bank being connected through BSNL MPLS network to the Data-canter. A combination of 64kbps and 128kbps WAN connectivity has been provided and alternative Broad band Internet connectivity has been provided during MPLS down time.

That apart, the bank is being used ACCFINA - CBS Application software system that is provided by M/s. Softbee consultancy services Pvt. Ltd.,

The software is functioning fine at the bank and competent enough to provide all reports that are guided by statutory and governing authorities. I have found the company is proficient in providing required modifications as and when we demand and their support & services on their software are good. The day end, quarter end and year end process is flawless and the company will take priority steps to fix the bugs if any in the software.

The bank has a satisfactory association with the firm in terms of their Software support and services since the year 2010



For The Bellary D C C Bank Ltd.,  
Hospet.,

  
Chief Executive Officer.

THANK YOU